

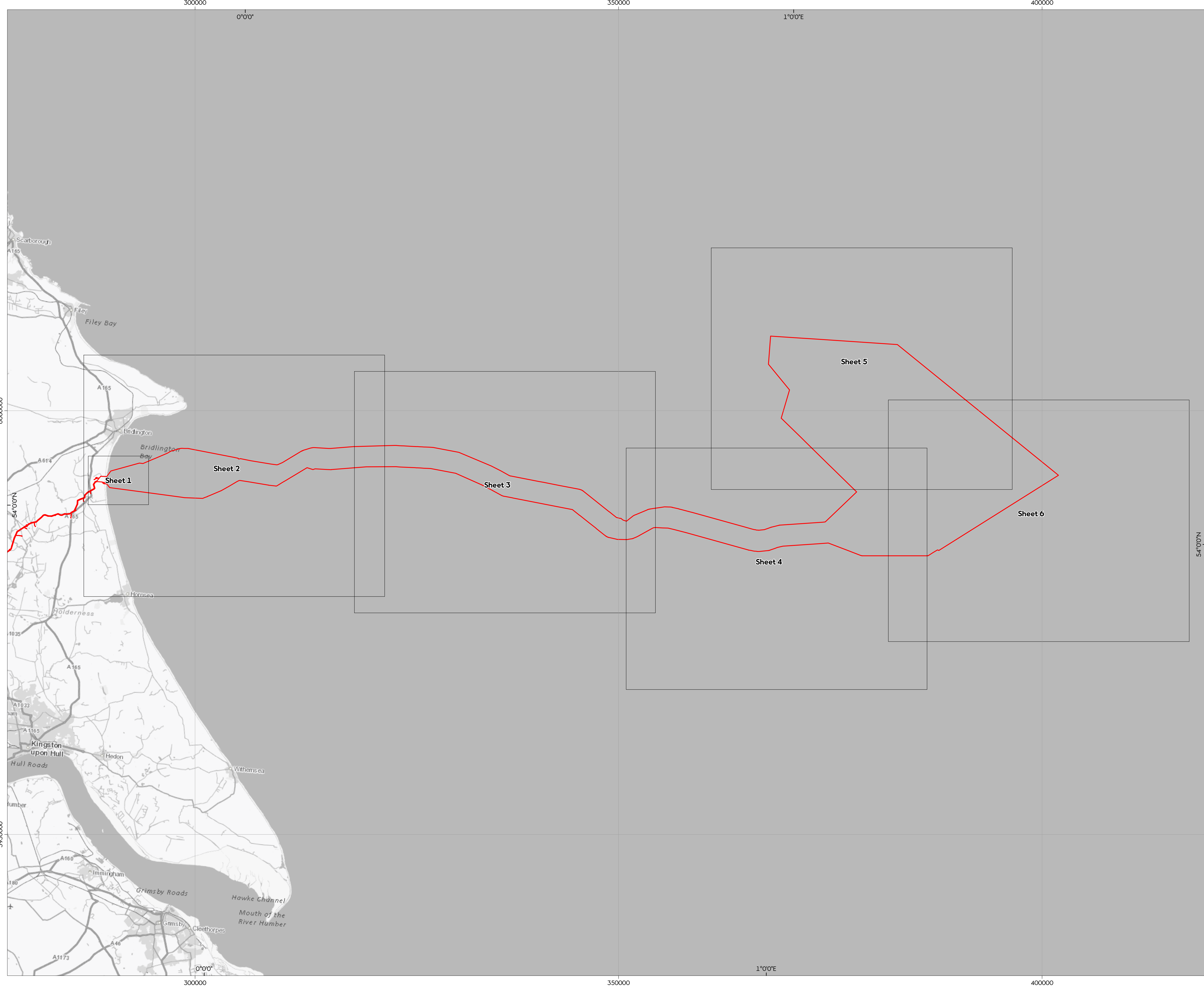


Hornsea Project Four: Plans and Drawings

PINS Document Reference: D1.2.1
APFP Regulation 5(2)(j)(ii)

Volume D1, 2.1: Offshore Order Limits and Grid Coordinates Plan

Prepared David Brooks, Ørsted, June 2021
Checked Hannah Towner-Roethe, Ørsted, June 2021
Accepted Keith Lynch, Ørsted, June 2021
Approved Jamie Baldwin, Ørsted, June 2021
Doc No: D1.2.1
Version: B

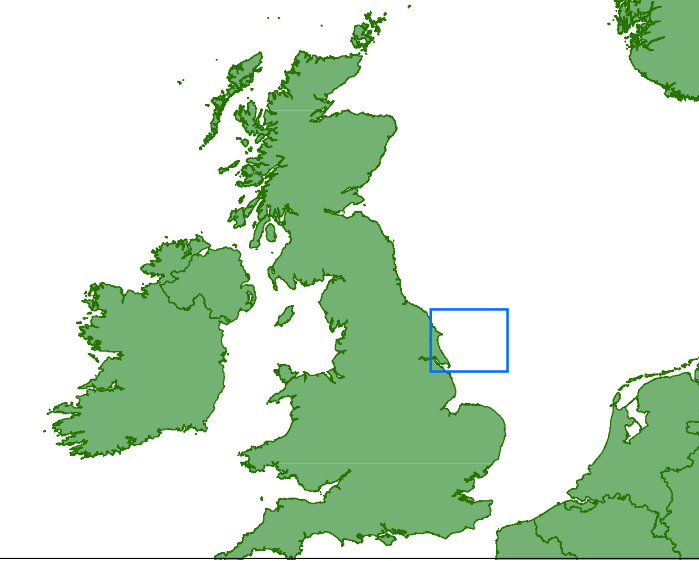


Hornsea Project Four Offshore Wind Farm Offshore Order Limits and Grid Coordinates Plan Index Sheet

APFP Regulations Reference: 5(2)(b) Application Document Number: D1.2.1

-  Sheet Boundary
-  Order Limits

Sources:
Service Layer Credits: Contains OS data © Crown Copyright and database right 2020.
© Crown copyright and database rights (2021) Ordnance Survey 0100031673. All rights reserved.

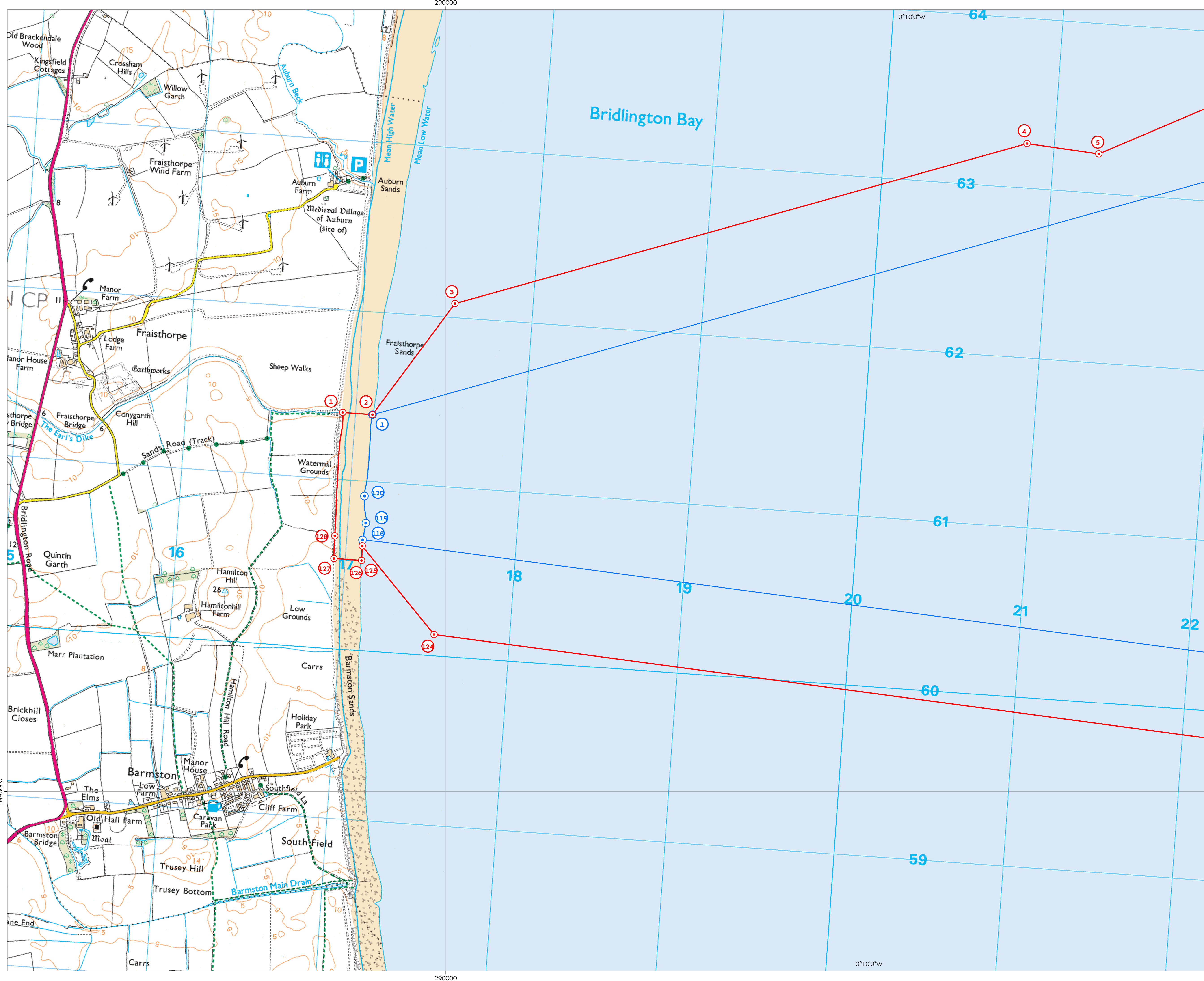


Coordinate system: ETRS 1989 UTM Zone 31N
Vertical reference: LAT
Scale @ A1: 1:200,000
0 2.5 5 10 Kilometers
0 1 2 4 Nautical Miles

REV	REVISION	DATE
A	Final Issue for PER	08/07/2021
B	Approved for use in the application, for DCO	08/07/2021
C	Reduced Area in northward corner	14/09/2021

Offshore Order Limits - Index Sheet
Document no: HOW040397
Created by: XDAAA
Checked by: HATOW
Accepted by: KEILY
Approved by: JAMIB





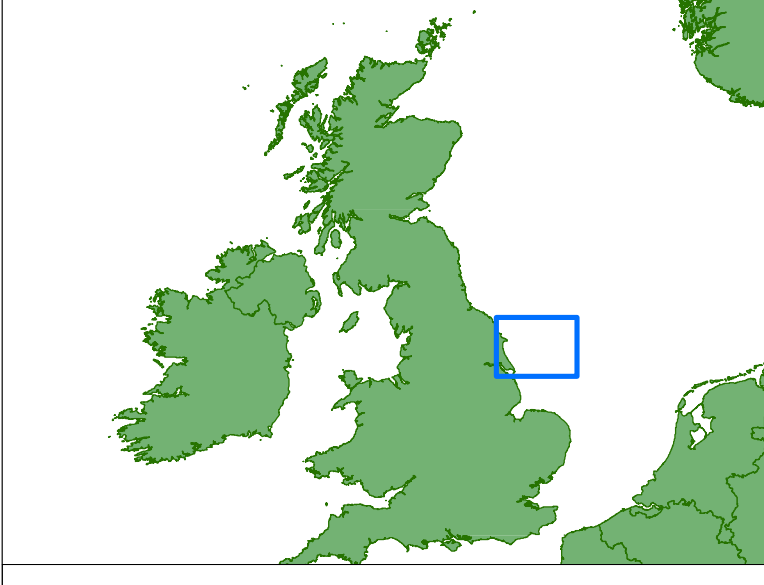
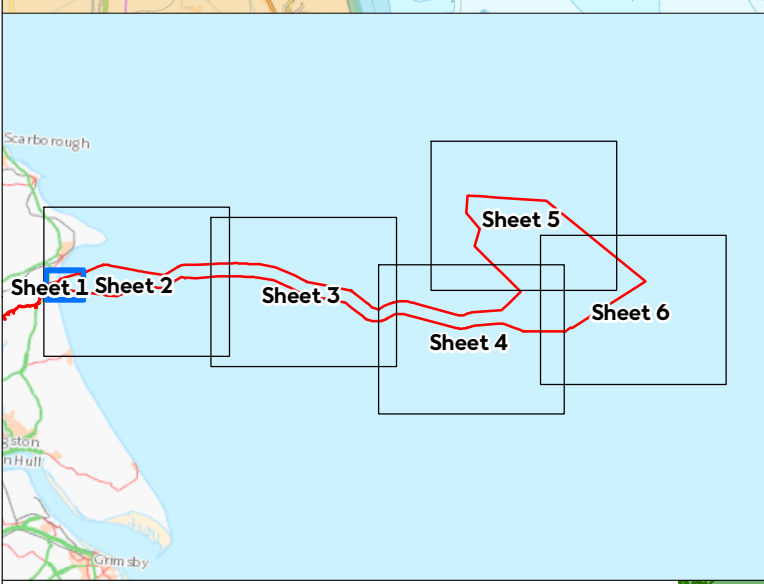
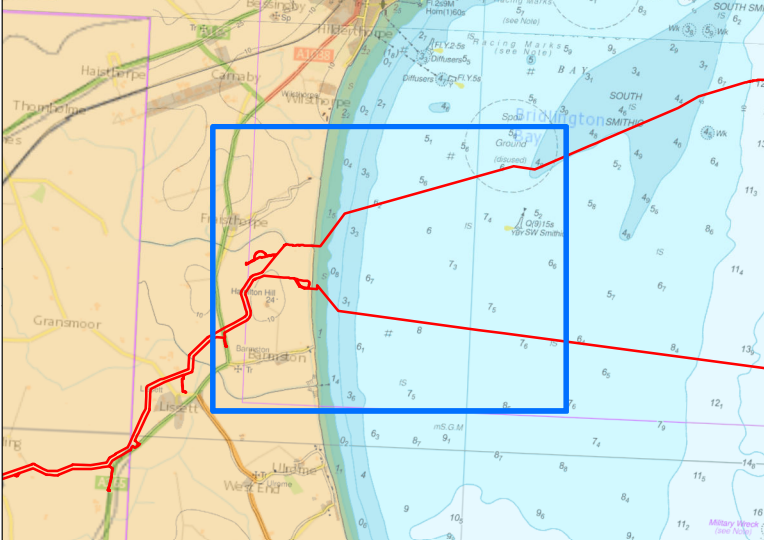
Hornsea Project Four Offshore Wind Farm Offshore Order Limits and Grid Coordinates Plan Sheet 1 of 7

APPP Regulations Reference : 5(2)(b) Application Document Number : D1.2.1

- Order limits node (point)*
- Limit of Deviation node (point)**
- Limit of Deviation (excluding temporary construction area)
- Order Limits (Offshore)

Note :
 * Order Limit node point coordinates are presented on sheet 7
 ** Limit of Deviation node point coordinates are presented on sheet 7
 *** Offshore HVAC booster station search area node point coordinates are presented on sheet 7
 **** Array Area node point coordinates are presented on sheet 7
 Due to the complexity of the shape, only key co-ordinates are displayed in table. Do not recreate vector data (GIS/CAD) from coordinates in table. If vector data is required, please contact a member of the Orsted GIS team.

Sources:
 Service Layer Credits: Contains OS data © Crown Copyright and database right 2020.
 © Crown copyright and database rights (2021) Ordnance Survey 0100031673. All rights reserved.



Coordinate system: ETRS 1989 UTM Zone 31N
 Vertical reference: LAT
 Scale @ A1: 1:10,000
 0 0.125 0.25 0.5 Kilometers
 0 0.05 0.1 0.2 Nautical Miles
 GRID NORTH

REV	REMARK	DATE
A	Updated following PER consultation, for DDD	03/02/2021
B	Reduced Array Area in northwest corner	18/06/2021

Offshore Order Limits
 Document no: HOW040397
 Created by: XDAO
 Checked by: HATOW
 Accepted by: KELLY
 Approved by: JAMB



Hornsea Project Four Offshore Wind Farm Offshore Order Limits and Grid Coordinates Plan Sheet 2 of 7

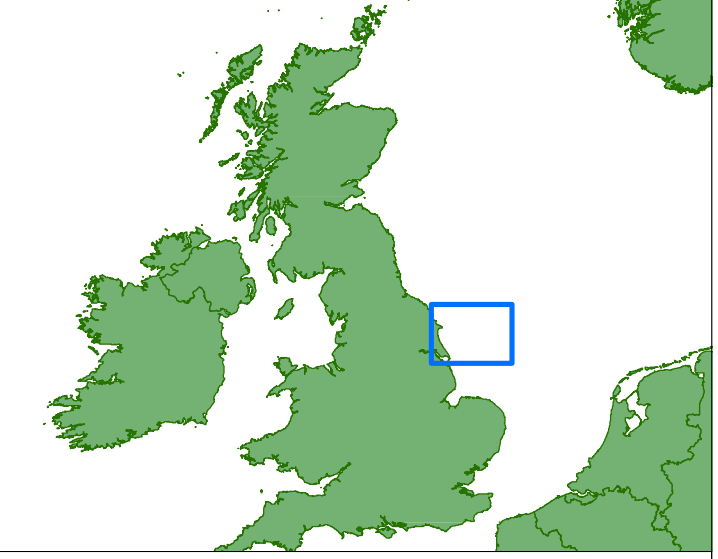
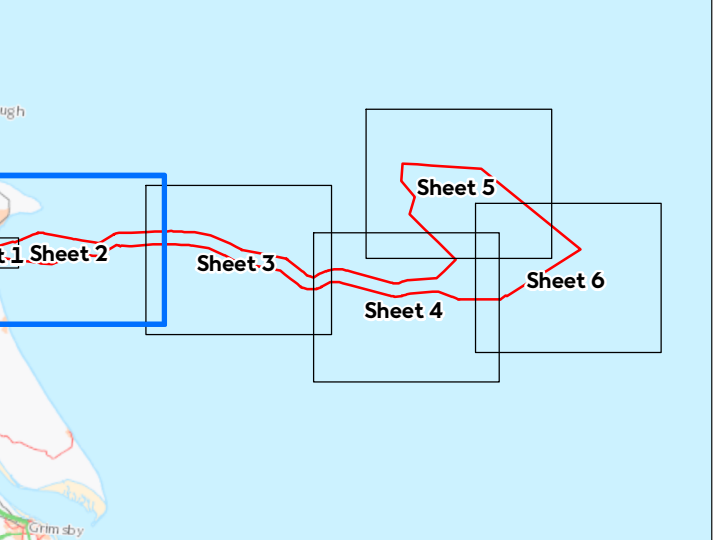
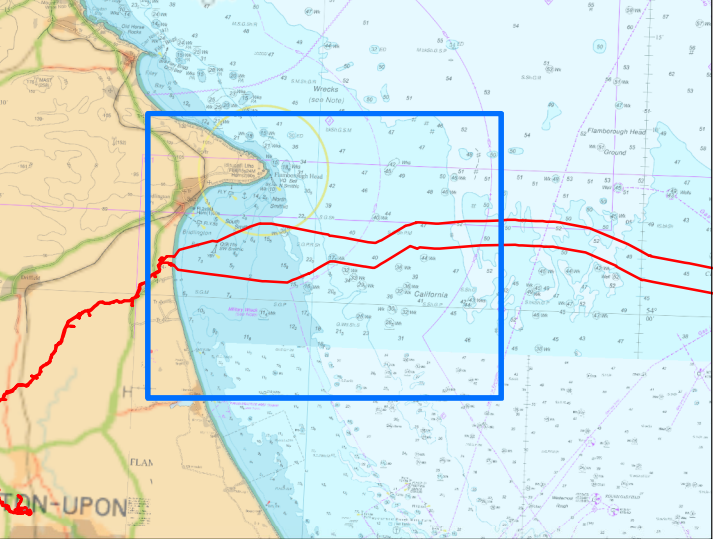
APPP Regulations Reference : S(2)(ii) Application Document Number : D1.2.1

- ○ Order Limits node (point)*
- ○ Limit of Deviation node (point)**
- Limit of Deviation (excluding temporary construction area)
- Order Limits (Offshore)

Note :
 * Order Limit node point coordinates are presented on sheet 7
 ** Limit of Deviation node point coordinates are presented on sheet 7
 *** Offshore HVAC booster station search area node point coordinates are presented on sheet 7
 **** Array Area node point coordinates are presented on sheet 7

Due to the complexity of the shape, only key co-ordinates are displayed in table. Do not recreate vector data (GIS/CAD) from coordinates in table. If vector data is required, please contact a member of the Orsted GIS team.

Sources:
 Service Layer Credits: Contains OS data © Crown Copyright and database right 2020.
 © Crown copyright and database rights (2021) Ordnance Survey 0100031673. All rights reserved.



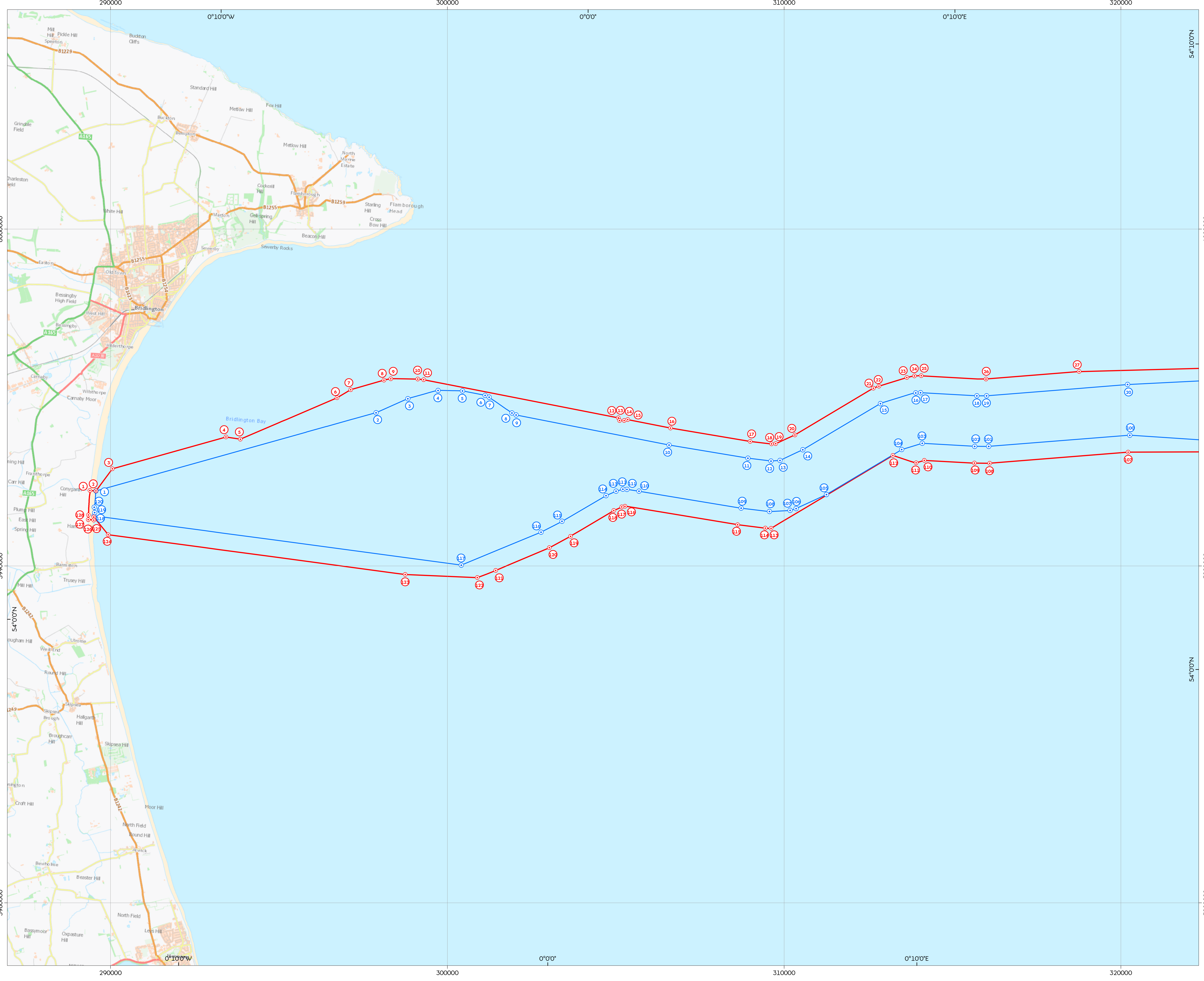
Coordinate system: ETRS 1989 UTM Zone 31N
 Vertical reference: LAT
 Scale @ A1: 1:50,000

0 0.5 1 2 Kilometers
 0 0.25 0.5 1 Nautical Miles

N
GRID
NORTH

REV	REMARK	DATE
1	First issue for PER	18/05/2021
A	Updated following PER consultations, for DDD	02/05/2021
B	Reduced Array Area in northwest corner	18/06/2021

Offshore Order Limits
 Document no: HOW040397
 Created by: XDAO
 Checked by: HATOW
 Accepted by: KELLY
 Approved by: JAMB



Hornsea Project Four Offshore Wind Farm

Offshore Order Limits and Grid Coordinates Plan

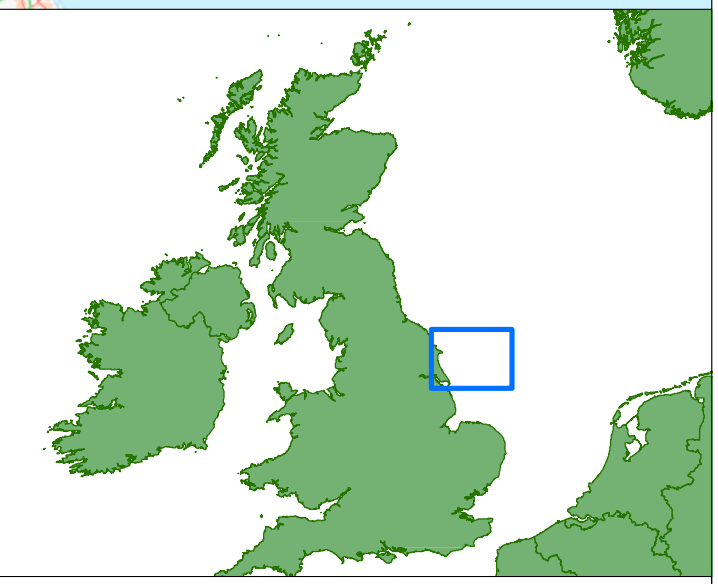
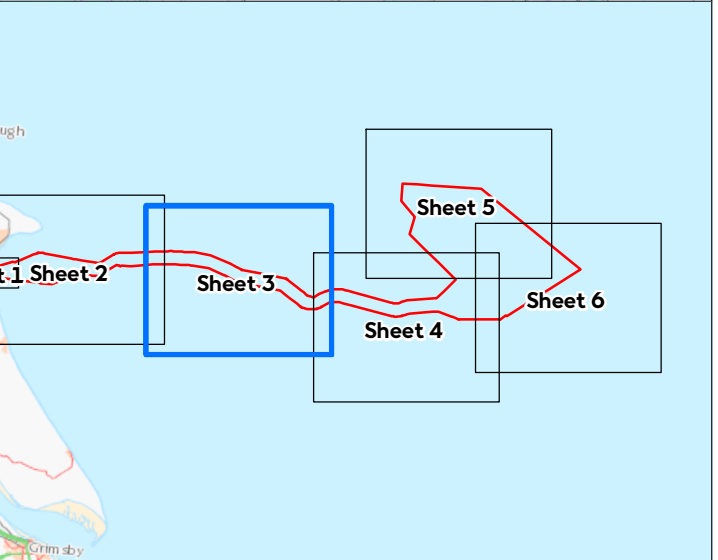
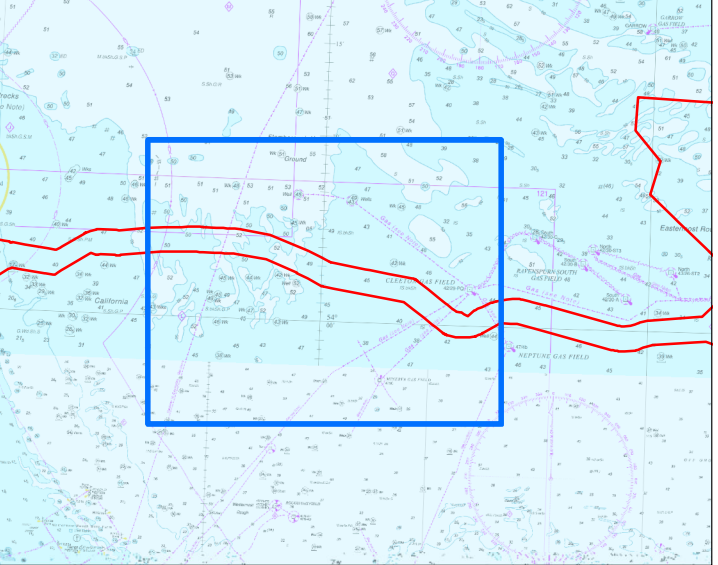
Sheet 3 of 7

APPP Regulations Reference : 5(2)(ii) Application Document Number : D1.2.1

- Order limits node (point)*
- Limit of Deviation node (point)**
- Offshore HVAC booster station node (point)***
- Limit of Deviation (excluding temporary construction area)
- Order Limits (Offshore)
- Offshore HVAC Booster Station Search Area

Note :
 * Order Limit node point coordinates are presented on sheet 7
 ** Limit of Deviation node point coordinates are presented on sheet 7
 *** Offshore HVAC booster station search area node point coordinates are presented on sheet 7
 **** Array Area node point coordinates are presented on sheet 7
 Due to the complexity of the shape, only key co-ordinates are displayed in table. Do not recreate vector data (GIS/CAD) from coordinates in table. If vector data is required, please contact a member of the Orsted GIS team.

Sources:
 Service Layer Credits: Contains OS data © Crown Copyright and database right 2020.
 © Crown copyright and database rights (2021) Ordnance Survey 0100031673. All rights reserved.




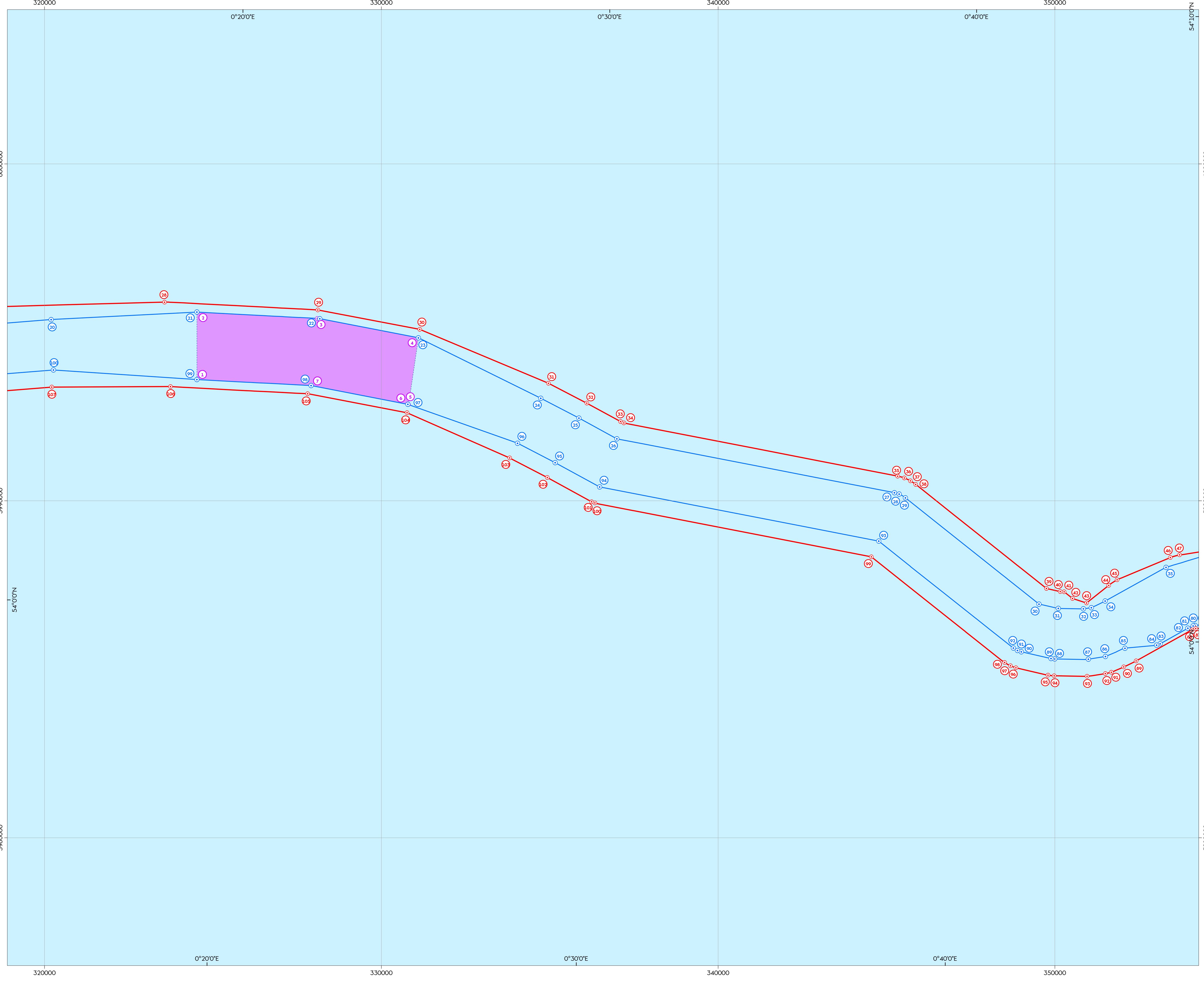
Coordinate system: ETRS 1989 UTM Zone 31N
 Vertical reference: LAT
 Scale @ A1: 1:50,000

0 0.5 1 2 Kilometers
 0 0.25 0.5 1 Nautical Miles

GRID NORTH

REV	REMARK	DATE
1	Final Issue for PER	18/05/2021
A	Updated following PER consultations, for DCD	02/02/2021
B	Reduced Array Area in northwest corner	18/05/2021

Offshore Order Limits
 Document no: HOW040397
 Created by: XDAO
 Checked by: HATOW
 Approved by: JAMIB

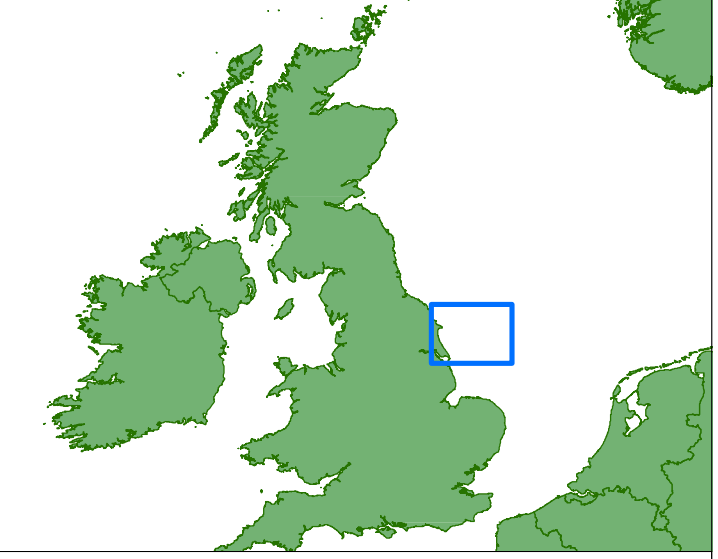
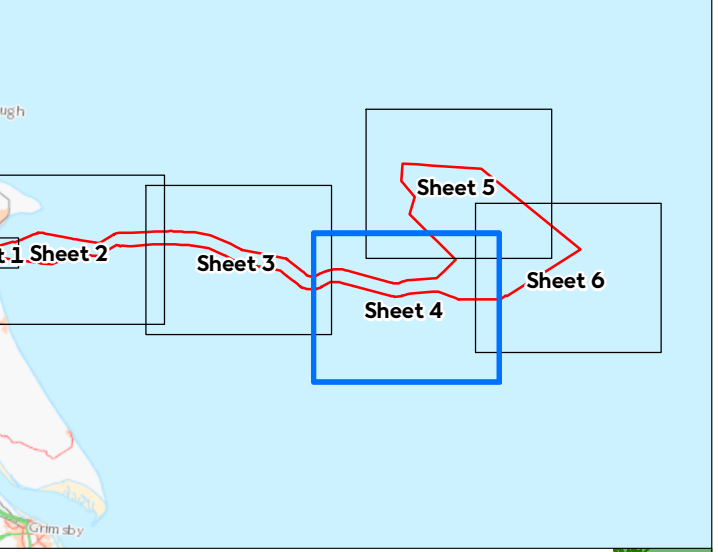
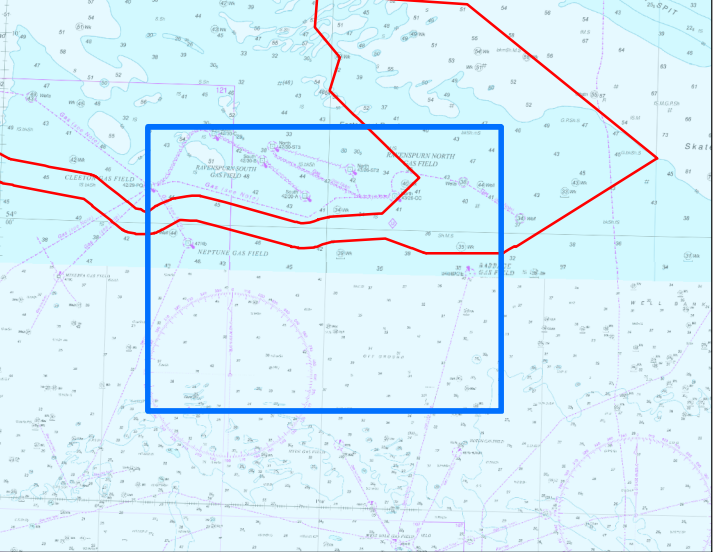
Hornsea Project Four Offshore Wind Farm Offshore Order Limits and Grid Coordinates Plan Sheet 4 of 7

APFP Regulations Reference : 5120/00 Application Document Number : D1.1.2.1

- Order limits node (point)*
- Limit of Deviation node (point)**
- Array Area node (point)****
- Limit of Deviation (excluding temporary construction area)
- Order Limits (Offshore)
- Array Area

Note :
 * Order Limit node point coordinates are presented on sheet 7
 ** Limit of Deviation node point coordinates are presented on sheet 7
 *** Offshore HVAC booster station search area node point coordinates are presented on sheet 7
 **** Array Area node point coordinates are presented on sheet 7
 Due to the complexity of the shape, only key co-ordinates are displayed in table. Do not recreate vector data (GIS/CAD) from coordinates in table. If vector data is required, please contact a member of the Orsted GIS team.

Sources:
 Service Layer Credits: Contains OS data © Crown Copyright and database right 2020.
 © Crown copyright and database rights (2021) Ordnance Survey 0100031673. All rights reserved.

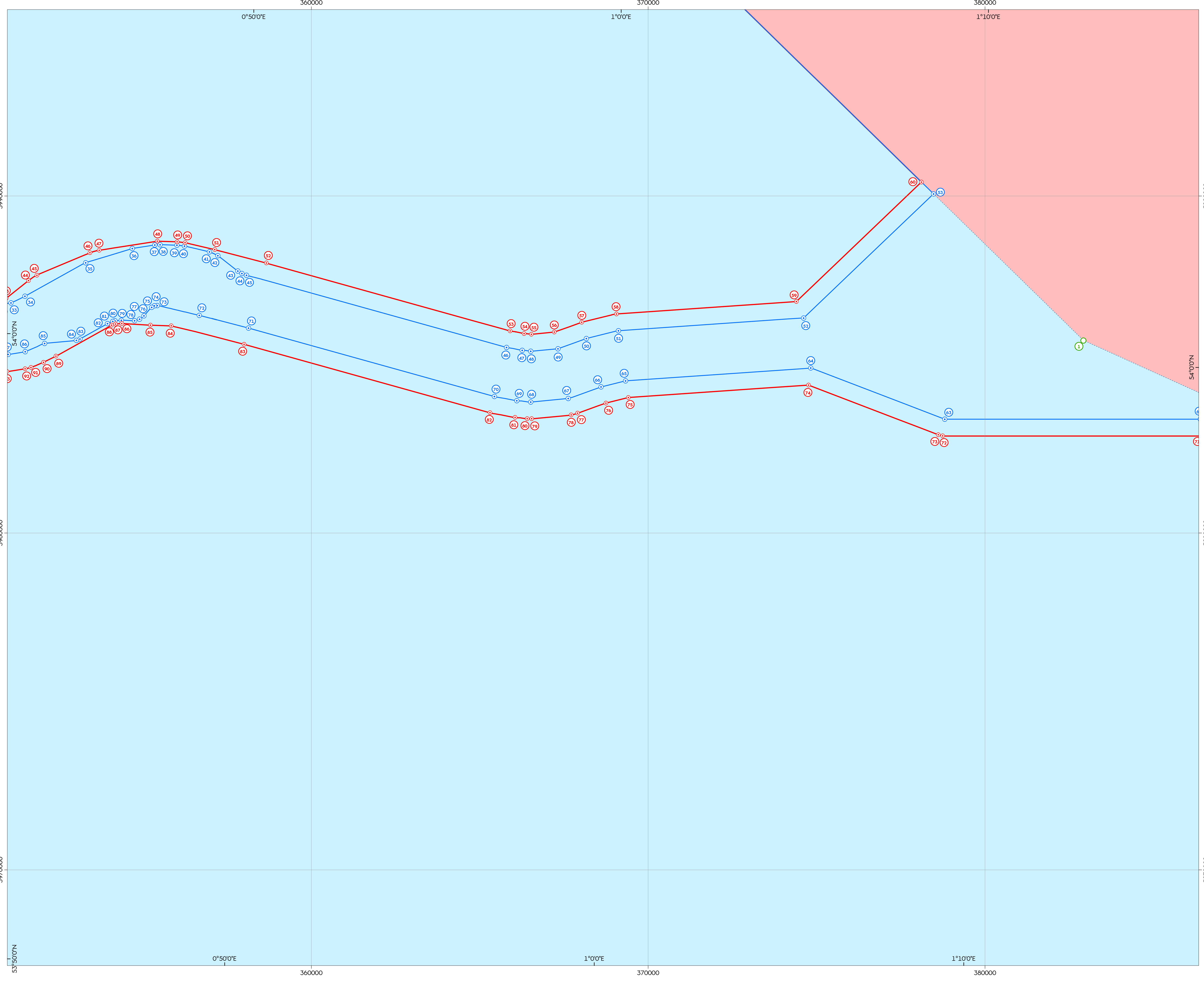


Coordinate system: ETRS 1989 UTM Zone 31N
 Vertical reference: LAT
 Scale @ A1: 1:50,000

0 0.5 1 2 Kilometers
 0 0.25 0.5 1 Nautical Miles

REV	REMARK	DATE
1	Final Issue for PER	18/05/2021
A	Updated following PER consultations, for DCD	02/02/2021
B	Reduced Array Area in northwest corner	18/05/2021

Offshore Order Limits
 Document no: HOW040397
 Created by: XDAAO
 Checked by: HATOW
 Accepted by: KELLY
 Approved by: JAMIB

Hornsea Project Four Offshore Wind Farm

Offshore Order Limits and Grid Coordinates Plan

Sheet 5 of 7

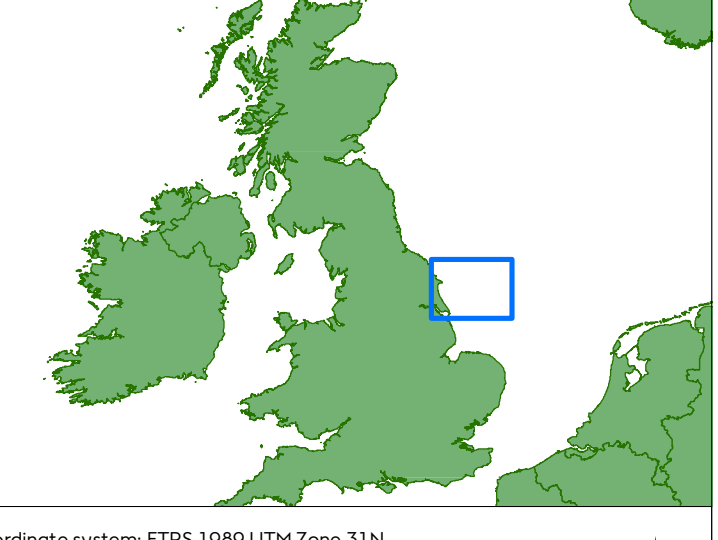
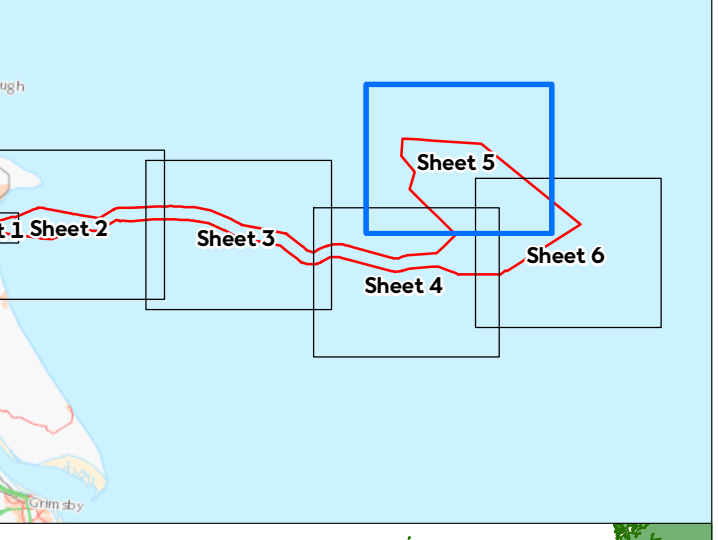
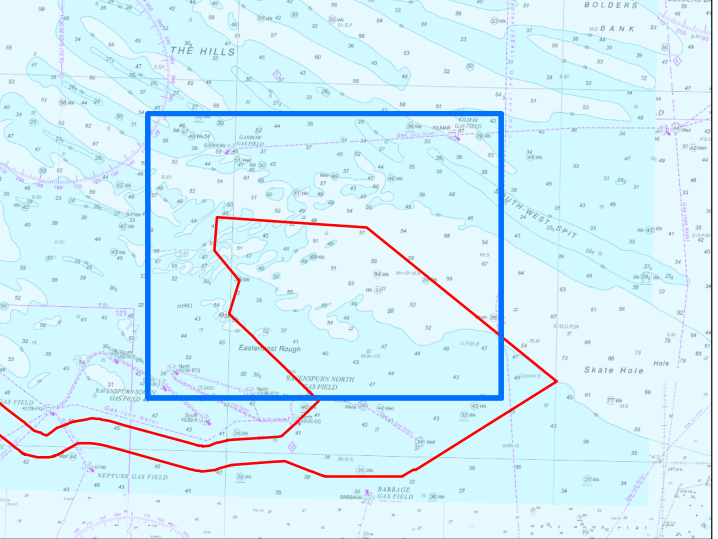
APFP Regulations Reference : 5(2)(ii) Application Document Number : D1.2.1

- Order limits node (point)*
- Limit of Deviation node (point)**
- Array Area node (point)****
- Limit of Deviation (excluding temporary construction area)
- Order Limits (Offshore)
- Array Area

Note :
 * Order Limit node point coordinates are presented on sheet 7
 ** Limit of Deviation node point coordinates are presented on sheet 7
 *** Offshore HVAC booster station search area node point coordinates are presented on sheet 7
 **** Array Area node point coordinates are presented on sheet 7

Due to the complexity of the shape, only key co-ordinates are displayed in table. Do not recreate vector data (GIS/CAD) from coordinates in table. If vector data is required, please contact a member of the Orsted GIS team.

Sources:
 Service Layer Credits: Contains OS data © Crown Copyright and database right 2020.
 © Crown copyright and database rights (2021) Ordnance Survey 0100031673. All rights reserved.




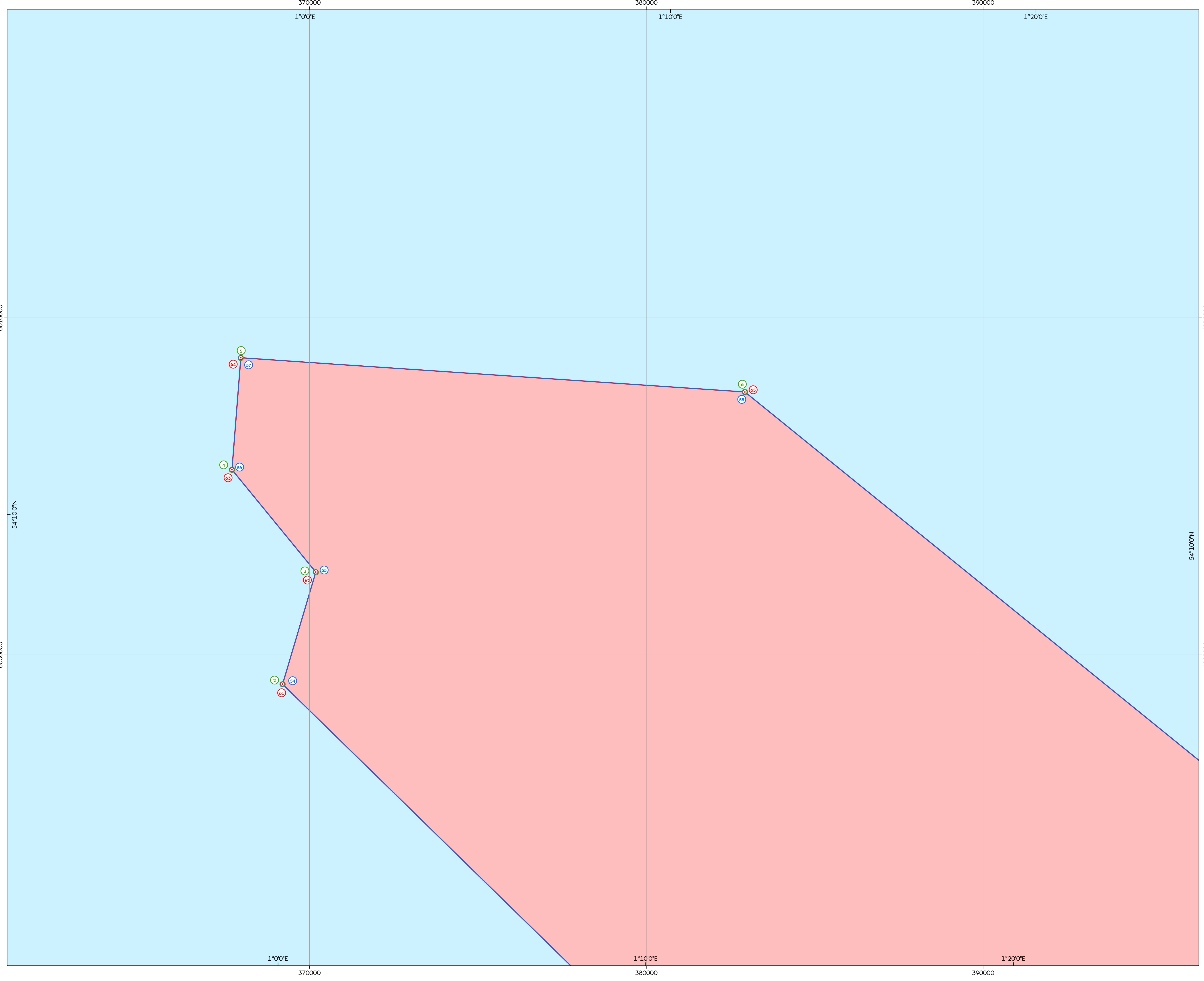
Coordinate system: ETRS 1989 UTM Zone 31N
 Vertical reference: LAT
 Scale @ A1: 1:50,000

0 0.5 1 2 Kilometers
 0 0.25 0.5 1 Nautical Miles

N
GRID
NORTH

REV	REMARK	DATE
0	First issue for PER	18/05/2021
A	Updated following PER consultations, for DCD	02/02/2021
B	Reduced Array Area in northwest corner	18/05/2021

Offshore Order Limits
 Document no: HOW040397
 Created by: XDAO
 Checked by: HATOW
 Accepted by: KELLY
 Approved by: JAMIB

Hornsea Project Four Offshore Wind Farm

Offshore Order Limits and Grid Coordinates Plan

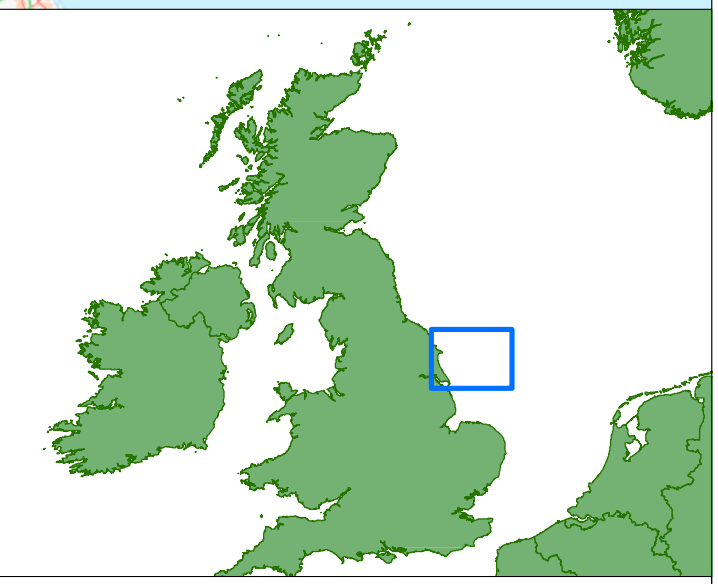
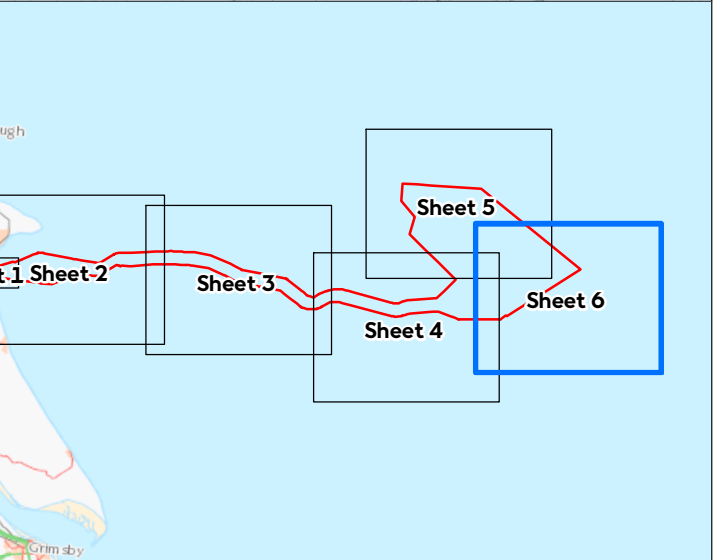
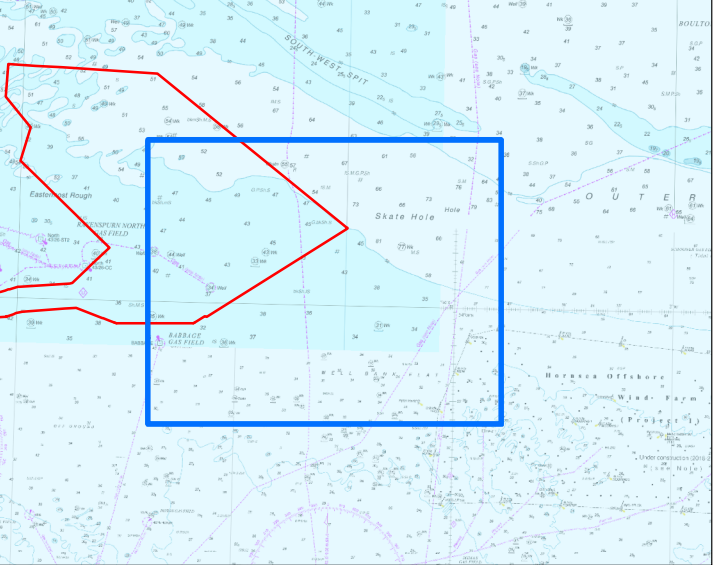
Sheet 6 of 7

APFP Regulations Reference : 5(2)(ii) Application Document Number : D1.2.1

- ⊙ Order limits node (point)*
- ⊙ Limit of Deviation node (point)**
- ⊙ Array Area node (point)****
- Limit of Deviation (excluding temporary construction area)
- Order Limits (Offshore)
- Array Area

Note :
 * Order Limit node point coordinates are presented on sheet 7
 ** Limit of Deviation node point coordinates are presented on sheet 7
 *** Offshore HVAC booster station search area node point coordinates are presented on sheet 7
 **** Array Area node point coordinates are presented on sheet 7
 Due to the complexity of the shape, only key co-ordinates are displayed in table. Do not recreate vector data (GIS/CAD) from coordinates in table. If vector data is required, please contact a member of the Orsted GIS team.

Sources:
 Service Layer Credits: Contains OS data © Crown Copyright and database right 2020.
 © Crown copyright and database rights (2021) Ordnance Survey 0100031673. All rights reserved.




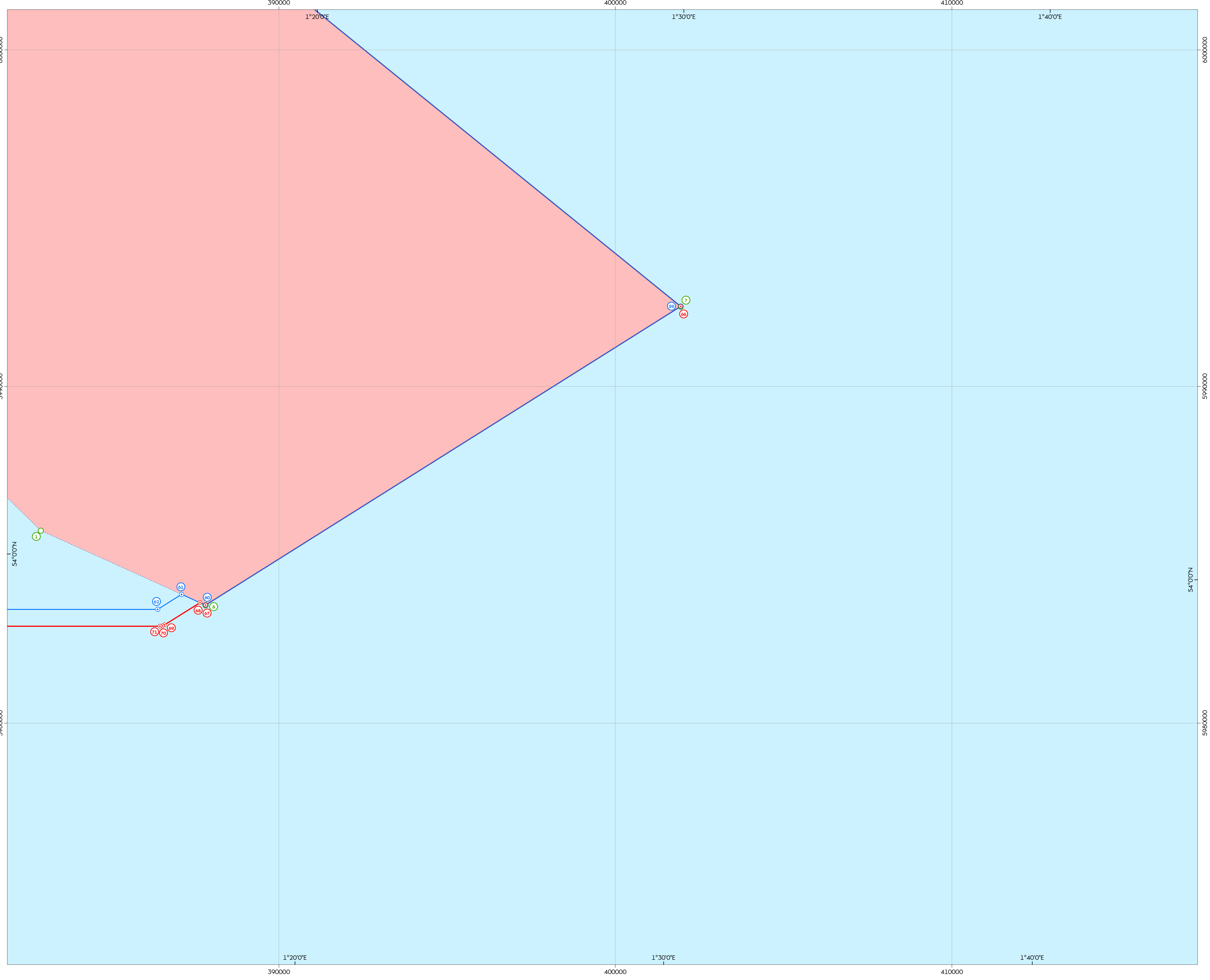
Coordinate system: ETRS 1989 UTM Zone 31N
 Vertical reference: LAT
 Scale @ A1: 1:50,000

0 0.5 1 2 Kilometers
 0 0.25 0.5 1 Nautical Miles

N
GRID NORTH

REV	REMARK	DATE
0	First issue for PER	18/05/2021
A	Updated following PER consultations, for DCD	02/02/2021
B	Reduced Array Area in northwest corner	18/05/2021

Offshore Order Limits
 Document no: HOW040397
 Created by: XDAO
 Checked by: HATOW
 Accepted by: KELLY
 Approved by: JAMIB

Hornsea Project Four

Offshore Wind Farm

Offshore Order Limits and Grid Coordinates Plan

Sheet 7 of 7

APPF Regulations Reference: 5/2008 Application Document Number: D1.2.1

Note:
 This page presents generalised coordinate tables of Order Limits,
 Limit of Deviation, *Offshore HVAC booster station search area &
 ****Array Area. Please refer to sheets 1-6 of this document for a
 geographic view of order limits, limit of deviation & offshore HVAC
 booster station search area.

Due to the complexity of the shape, only key co-ordinates are
 displayed in table. Do not recreate vector data (GIS/CAD) from
 coordinates in table. If vector data is required, please contact a
 member of the Orsted GIS team.

Eastings & Northings presented in tables are rounded to nearest
 metre.

Offshore Limits of Deviation Coordinates

Offshore Limit of Deviation Coordinates						
Development Area Node Point	WGS84 UTM Zone 31N (metres)		WGS84 (Degrees Minutes Seconds)		WGS84 (Decimal Degrees)	
	Eastings	Northing	Latitude	Longitude	Latitude	Longitude
1	289567	5992226	54° 2' 7.022" N	0° 12' 48.680" W	54.03528	-0.21352
2	297885	5994552	54° 3' 5.165" N	0° 5' 17.151" W	54.05949	-0.08825
3	298830	5994967	54° 3' 48.891" N	0° 4' 26.859" W	54.06358	-0.07413
4	299726	5995212	54° 3' 58.051" N	0° 3' 38.187" W	54.06613	-0.06061
5	300452	5995195	54° 3' 58.524" N	0° 2' 58.304" W	54.06626	-0.04953
6	301125	5995062	54° 3' 55.164" N	0° 2' 20.993" W	54.06532	-0.03916
7	301243	5995007	54° 3' 53.563" N	0° 2' 14.417" W	54.06488	-0.03734
8	301920	5994540	54° 3' 39.395" N	0° 1' 36.102" W	54.06094	-0.02669
9	302043	5994481	54° 3' 37.671" N	0° 1' 29.193" W	54.06046	-0.02478
10	306585	5993590	54° 3' 15.066" N	0° 2' 42.291" E	54.05418	0.04508
11	308924	5993202	54° 3' 5.693" N	0° 4' 51.673" E	54.05158	0.08102
12	309614	5993117	54° 3' 3.865" N	0° 5' 29.724" E	54.05107	0.09159
13	309877	5993133	54° 3' 4.716" N	0° 5' 44.139" E	54.05131	0.09559
14	310558	5993450	54° 3' 15.854" N	0° 6' 20.842" E	54.05440	0.10579
15	312865	5994820	54° 4' 3.165" N	0° 8' 24.480" E	54.06755	0.14013
16	313908	5995138	54° 4' 14.808" N	0° 9' 21.101" E	54.07078	0.15586
17	314052	5995144	54° 4' 15.184" N	0° 9' 28.991" E	54.07088	0.15805
18	315726	5995051	54° 4' 14.353" N	0° 11' 1.180" E	54.07065	0.18366
19	316011	5995048	54° 4' 14.623" N	0° 11' 16.867" E	54.07073	0.18802
20	320199	5995383	54° 4' 30.753" N	0° 15' 6.258" E	54.07521	0.25174
21	324524	5995601	54° 4' 43.181" N	0° 19' 3.520" E	54.07866	0.31764
22	328175	5995408	54° 4' 41.380" N	0° 22' 24.555" E	54.07816	0.37349
23	331104	5994842	54° 4' 26.558" N	0° 25' 6.728" E	54.07404	0.41854
24	334737	5993045	54° 3' 32.702" N	0° 28' 29.909" E	54.05908	0.47497
25	335869	5992456	54° 3' 14.985" N	0° 29' 33.256" E	54.05416	0.49257
26	336997	5991841	54° 2' 56.388" N	0° 30' 36.421" E	54.04900	0.51012
27	345237	5990243	54° 2' 13.859" N	0° 38' 12.053" E	54.03718	0.63668
28	345376	5990202	54° 2' 12.681" N	0° 38' 19.742" E	54.03686	0.63882
29	345563	5990092	54° 2' 9.349" N	0° 38' 30.201" E	54.03593	0.64172
30	349529	5986938	54° 0' 31.575" N	0° 42' 13.684" E	54.00877	0.70380
31	350102	5986806	54° 0' 27.918" N	0° 42' 45.357" E	54.00775	0.71260
32	350845	5986793	54° 0' 28.271" N	0° 43' 26.174" E	54.00785	0.72394
33	351084	5986831	54° 0' 29.752" N	0° 43' 39.187" E	54.00826	0.72755
34	351496	5987025	54° 0' 36.437" N	0° 44' 1.478" E	54.01012	0.73374
35	353301	5988023	54° 1' 10.585" N	0° 45' 38.815" E	54.01961	0.76078
36	354686	5988441	54° 1' 25.502" N	0° 46' 54.148" E	54.02375	0.78171
37	355351	5988549	54° 1' 29.654" N	0° 47' 30.476" E	54.02490	0.79180
38	355509	5988559	54° 1' 30.134" N	0° 47' 39.160" E	54.02504	0.79421
39	356008	5988543	54° 1' 30.123" N	0° 48' 6.575" E	54.02503	0.80183
40	356235	5988516	54° 1' 29.489" N	0° 48' 19.055" E	54.02486	0.80529

Offshore Limit of Deviation Coordinates						
Development Area Node Point	WGS84 UTM Zone 31N (metres)		WGS84 (Degrees Minutes Seconds)		WGS84 (Decimal Degrees)	
	Eastings	Northing	Latitude	Longitude	Latitude	Longitude
41	356972	5988343	54° 1' 24.623" N	0° 48' 59.870" E	54.02351	0.81663
42	357226	5988228	54° 1' 21.176" N	0° 49' 13.963" E	54.02255	0.82055
43	357815	5987775	54° 1' 7.100" N	0° 49' 47.117" E	54.01864	0.82975
44	357939	5987703	54° 1' 4.886" N	0° 49' 54.029" E	54.01802	0.83167
45	358075	5987648	54° 1' 3.251" N	0° 50' 1.554" E	54.01757	0.83376
46	365796	5985506	54° 0' 14.311" N	0° 57' 8.928" E	54.00040	0.95248
47	366264	5985419	53° 59' 59.056" N	0° 57' 34.736" E	53.99974	0.95965
48	366516	5985394	53° 59' 58.467" N	0° 57' 48.601" E	53.99957	0.96350
49	367324	5985470	54° 0' 1.692" N	0° 58' 32.871" E	54.00047	0.97580
50	368168	5985772	54° 0' 12.218" N	0° 59' 18.689" E	54.00339	0.98852
51	369120	5986004	54° 0' 20.600" N	1° 0' 10.608" E	54.00572	1.00295
52	374618	5986385	54° 0' 37.814" N	1° 5' 11.832" E	54.01050	1.08662
53	378473	5990067	54° 2' 40.236" N	1° 8' 38.217" E	54.04451	1.14395
54	369202	5999126	54° 7' 24.985" N	0° 59' 54.702" E	54.12361	0.99853
55	370188	6002454	54° 9' 13.497" N	1° 0' 43.850" E	54.15375	1.01218
56	367696	6005493	54° 10' 49.480" N	0° 58' 21.782" E	54.18041	0.97272
57	367961	6008815	54° 12' 37.143" N	0° 58' 31.095" E	54.21032	0.97530
58	382928	6007800	54° 12' 17.413" N	1° 12' 18.263" E	54.20484	1.20507
59	401941	5992380	54° 4' 13.012" N	1° 30' 5.270" E	54.07028	1.50146
60	387821	5983504	53° 59' 15.598" N	1° 17' 20.651" E	53.98767	1.28907
61	387110	5983826	53° 59' 25.445" N	1° 16' 41.184" E	53.99040	1.27811
62	386397	5983379	53° 59' 10.422" N	1° 16' 2.644" E	53.98623	1.26740
63	378809	5983380	53° 59' 4.241" N	1° 9' 6.286" E	53.98451	1.15175
64	374828	5984899	53° 59' 49.956" N	1° 5' 25.589" E	53.99721	1.09044
65	369332	5984516	53° 59' 32.687" N	1° 0' 24.550" E	53.99241	1.00682
66	368603	5984335	53° 59' 26.162" N	0° 59' 44.788" E	53.99060	0.99577
67	367629	5983996	53° 59' 14.292" N	0° 58' 51.906" E	53.98730	0.98109
68	366517	5983889	53° 59' 9.798" N	0° 57' 51.038" E	53.98605	0.96418
69	366101	5983924	53° 59' 10.550" N	0° 57' 28.183" E	53.98626	0.95783
70	365436	5984049	53° 59' 13.988" N	0° 56' 51.475" E	53.98722	0.94763
71	358135	5986083	54° 0' 12.694" N	0° 50' 7.491" E	54.00353	0.83541
72	356676	5986458	54° 0' 23.396" N	0° 48' 46.761" E	54.00650	0.81299
73	355426	5986753	54° 0' 31.653" N	0° 47' 37.655" E	54.00879	0.79379
74	355338	5986741	54° 0' 31.208" N	0° 47' 32.886" E	54.00867	0.79247
75	355260	5986701	54° 0' 29.809" N	0° 47' 28.656" E	54.00828	0.79129
76	355300	5986445	54° 0' 21.318" N	0° 47' 16.481" E	54.00592	0.78791
77	354898	5986343	54° 0' 17.889" N	0° 47' 9.407" E	54.00497	0.78595
78	354751	5986298	54° 0' 16.262" N	0° 47' 1.384" E	54.00452	0.78372
79	354357	5986315	54° 0' 16.439" N	0° 46' 39.725" E	54.00457	0.77770
80	354166	5986302	54° 0' 15.812" N	0° 46' 29.279" E	54.00439	0.77480

Offshore Limit of Deviation Coordinates						
Development Area Node Point	WGS84 UTM Zone 31N (metres)		WGS84 (Degrees Minutes Seconds)		WGS84 (Decimal Degrees)	
	Eastings	Northing	Latitude	Longitude	Latitude	Longitude
81	354105	5986283	54° 0' 15.152" N	0° 46' 25.999" E	54.00421	0.77389
82	353949	5986216	54° 0' 12.810" N	0° 46' 17.516" E	54.00356	0.77153
83	353129	5985760	53° 59' 57.223" N	0° 45' 33.327" E	53.99923	0.75926
84	353024	5985719	53° 59' 55.805" N	0° 45' 27.617" E	53.99883	0.75767
85	352081	5985626	53° 59' 51.821" N	0° 44' 36.054" E	53.99773	0.74335
86	351505	5985385	53° 59' 43.448" N	0° 44' 4.870" E	53.99540	0.73469
87	350995	5985298	53° 59' 40.099" N	0° 43' 37.030" E	53.99447	0.72695
88	349997	5985308	53° 59' 39.364" N	0° 42' 42.269" E	53.99427	0.71174
89	349886	5985318	53° 59' 39.579" N	0° 42' 36.156" E	53.99433	0.71004
90	349005	5985519	53° 59' 45.174" N	0° 41' 47.424" E	53.99588	0.69651
91	348892	5985559	53° 59' 46.330" N	0° 41' 41.187" E	53.99620	0.69477
92	348768	5985629	53° 59' 48.461" N	0° 41' 34.230" E	53.99679	0.69284
93	344770	5988805	54° 1' 26.884" N	0° 37' 49.060" E	54.02413	0.63029
94	336483	5990413	54° 2' 9.633" N	0° 30' 10.959" E	54.03601	0.50304
95	335164	5991132	54° 2' 31.374" N	0° 28' 57.112" E	54.04205	0.48253
96	334045	5991714	54° 2' 48.880" N	0° 27' 54.521" E	54.04691	0.46514
97	330792	5992864	54° 3' 22.257" N	0° 24' 53.517" E	54.05618	0.41487
98	327917	5993421	54° 3' 36.841" N	0° 22' 14.442" E	54.06023	0.37068
99	324524	5993598	54° 3' 38.451" N	0° 19' 7.694" E	54.06068	0.31880
100	320265	5993883	54° 3' 42.374" N	0° 15' 13.092" E	54.06177	0.25364
101	316075	5993549	54° 3' 26.248" N	0° 11' 23.613" E	54.05729	0.18989
102	315660	5993553	54° 3' 25.836" N	0° 11' 0.826" E	54.05718	0.18356
103	314102	5993639	54° 3' 26.611" N	0° 9' 35.082" E	54.05739	0.15974
104	313495	5993453	54° 3' 19.814" N	0° 9' 2.139" E	54.05550	0.15059
105	311260	5992123	54° 2' 33.896" N	0° 7' 2.333" E	54.04275	0.11731
106	310358	5991703	54° 2' 19.145" N	0° 6' 13.795" E	54.03865	0.10383
107	310178	5991651	54° 2' 17.204" N	0° 6' 4.007" E	54.03812	0.10111
108	309566	5991615	54° 2' 15.254" N	0° 5' 30.489" E	54.03757	0.09180
109	308726	5991716	54° 2' 17.382" N	0° 4' 44.121" E	54.03816	0.07892
110	305692	5992217	54° 2' 29.503" N	0° 1' 56.429" E	54.04153	0.03234
111	305337	5992273	54° 2' 30.833" N	0° 1' 36.805" E	54.04190	0.02689
112	305215	5992278	54° 2' 30.813" N	0° 1' 30.111" E	54.04189	0.02503
113	305010	5992219	54° 2' 28.639" N	0° 1' 18.979" E	54.04129	0.02194
114	304715	5992088	54° 2' 24.			